



COLUMBUS CITY SCHOOLS

2018 FACILITIES TASK FORCE FINAL RECOMMENDATIONS

PRESENTATION TO THE COLUMBUS BOARD OF EDUCATION
NOVEMBER 7, 2018

THE CHARGE OF THE FACILITIES TASK FORCE

COMMUNITY-LED TASK FORCE SUPPORTED BY DISTRICT STAFF WHO RECOMMENDED PROCESS FOR SCREENING BASED ON NATIONAL BEST-PRACTICE, LOCAL HISTORICAL WORK, AND SUBJECT-MATTER EXPERTISE.

REVIEW DATA AND MAKE RECOMMENDATIONS ON SCHOOLS AND ADMINISTRATIVE BUILDINGS FOR CLOSING OR CHANGING ATTENDANCE BOUNDARIES AND/OR GRADE CONFIGURATIONS.

RECOMMENDATIONS WILL BE BASED ON OVERALL BALANCE AND **OBJECTIVITY OF FACTORS LISTED IN BOARD POLICY 7105.**

PROVIDE RECOMMENDATIONS THAT HAVE A **STATEMENT OF RATIONALE.**

ISSUE DRAFT REPORT TO THE BOARD OF EDUCATION BY THE END OF AUGUST. **FINAL REPORT BY OCTOBER.**

REVIEWING THE DATA

THREE PHASE CRITERIA

**BENEFIT TO STUDENTS /
EFFECTIVE USE OF RESOURCES**

QUANTITATIVE DATA

QUALITATIVE ANALYSIS

IMPACT POTENTIAL

OBJECTIVITY OF FACTORS

(SCHOOL SITE CRITERIA)

PHASE 1 CRITERIA	PHASE 2 CRITERIA		PHASE 3 CRITERIA
STUDENT ENROLLMENT	EDUCATIONAL PROGRAM	RESIDENTIAL TRENDS	RELOCATION
BUILDING UTILIZATION	SAFETY AND ACCESS	LOTTERY WAITLIST	BURDEN
BUILDING CONDITION	ACCESSIBILITY	GRADE BAND DESIGN	DIVERSITY
STUDENT TRANSFER IN/OUT RATES	FUTURE USE	EVENT ACCOMMODATION	SPACE TO ACCOMMODATE CHOICE
	CIRCUMSTANCE	DISTRICT OPTIONS AND LIMITATIONS	ABILITY TO MAINTAIN FEEDER PATTERNS
	LOCATION AND SITE CHARACTERISTICS	WORK ORDER/FAMIS	ACADEMIC GROWTH

TIMELINE

APRIL 12	2018 Facilities Task Force Organizational Meeting	X
APRIL 27	School Work Group proposes and Task Force approves recommended criteria for initial screening of schools.	X
MAY 10	Task Force approves recommended criteria for initial screening of administrative sites.	X
MAY 25	School Work Group shares school-specific data on Phase 1 initial screening of all schools.	X
JUNE 14	CANCELLED	X
JUNE 29	School Work Group shares Residential Growth Info. Administrative Site Work Group shares results of Phase 1 screening of all administrative buildings.	X
AUGUST 17	School Work Group presents results of Phase 2 and 3 screenings, offer recommendations for consideration.	X
AUGUST 20	Administrative Site Work Group presents results of Phase 2 and 3 screenings, offers recommendations.	X
AUGUST 30	Facilities Task Force finalizes Draft Recommendations on School and Administrative Sites.	X
SEPTEMBER 4	Presentation of Facilities Task Force Draft Recommendations to Board of Education.	X
SEPT/OCT	Community outreach and public meetings to gather feedback on Draft Recommendations.	X
OCTOBER	Facilities Task Force to offer Final Recommendations on School and Administrative Sites to Board of Education.	X
NOVEMBER	Presentation to the Board of Education on the 2018 Facilities Task Force Final Recommendations.	

PRELIMINARY RECOMMENDATIONS

RECOMMENDATION

1

BOUNDARY CHANGE

HIGHLAND ELEMENTARY • WEST BROAD ELEMENTARY • WESTGATE ELEMENTARY

RECOMMENDATION

2

BOUNDARY CHANGE

MAIZE ELEMENTARY • NORTH LINDEN ELEMENTARY

RECOMMENDATION

3

RELOCATION

COLUMBUS NORTH INTERNATIONAL • COLUMBUS GLOBAL ACADEMY • DOMINION MIDDLE •
COLUMBUS SPANISH IMMERSION ACADEMY • ECOLE KENWOOD FRENCH IMMERSION •
HUBBARD MASTERY SCHOOL

RECOMMENDATION

4

ADJUST FEEDER PATTERN

MARION FRANKLIN HIGH SCHOOL • SOUTH HIGH SCHOOL • BUCKEYE MIDDLE SCHOOL •
SIEBERT ELEMENTARY K-6 • FAIRWOOD ELEMENTARY K-6 • LINCOLN PARK ELEMENTARY K-6 •
LIVINGSTON ELEMENTARY K-6 • MOLER ELEMENTARY K-6 • STEWART ELEMENTARY K-6 •
SOUTHWOOD ELEMENTARY K-6 • CEDARWOOD ELEMENTARY • PARSONS ELEMENTARY •
WATKINS ELEMENTARY

RECOMMENDATION

5

ADJUST FEEDER PATTERN

EAST HIGH SCHOOL • LINDEN-McKINLEY STEM ACADEMY • HAMILTON STEM K-6 • LINDEN
STEM K-6 • SOUTH MIFFLIN STEM K-6 • WINDSOR STEM K-6 •
MEDINA MIDDLE SCHOOL • MIFFLIN MIDDLE SCHOOL

PRELIMINARY RECOMMENDATIONS

ADMIN SITE RECOMMENDATION

1

**CLOSE
MORSE ROAD BUS COMPOUND • BEERY/MARION-FRANKLIN OPPORTUNITY CENTER
• ADULT EDUCATION AT LEXINGTON AVE.**

ADMIN SITE RECOMMENDATION

2

**RELOCATE
LINMOOR EDUCATION CENTER • SEVENTEENTH AVE. FACILITY •
HUDSON DISTRIBUTION CENTER**

ADMIN SITE RECOMMENDATION

3

**STUDY
DOWNTOWN CEC • FOOD PRODUCTION CENTER • KINGSWOOD DATA CENTER •
FORT HAYES TRANSPORTATION COMPOUND**

IMPRESSIVE COMMUNITY FEEDBACK

Thousands of voices throughout the city were heard through our Community Feedback efforts.
UNFILTERED FEEDBACK SHARED DIRECTLY WITH ALL TASK FORCE MEMBERS

- **IN PERSON:** 7 Community Meetings
 - Linden-McKinley STEM Academy
 - Marion-Franklin High School
 - Columbus North International
 - Columbus Education Center
 - South High School
 - Mifflin Middle School
 - East High School
- **STUDENTS:** Hundreds of student responses during in-school presentations
- **EMAIL:** More than 100 emails to talktous@columbus.k12.oh.us
- **WEBSITE/APP:** 60 Responses to online survey
- **PHONE:** Dozens of calls to the Office of Customer Relations

CONSIDERATION OF ALTERNATIVES

ALTERNATIVE SCENARIO 1	Convert South into a middle school instead of Marion-Franklin
ALTERNATIVE SCENARIO 2	Co-locate Buckeye Middle School (6-8) at Marion-Franklin High School (9-12)
ALTERNATIVE SCENARIO 3	Convert South into separate South Middle School (6-8) and South High School (9-12)
ALTERNATIVE SCENARIO 4	Close Siebert Elementary
ALTERNATIVE SCENARIO 5	Convert Linden-McKinley into separate Linden-McKinley Middle School (6-8) and Linden-McKinley High School (9-12)
ALTERNATIVE SCENARIO 6	Redraw Linden-McKinley feeder; Reopen Linmoor Middle and Hudson Elem; Build new Linden-McKinley; Sell current Linden-McKinley High School
ALTERNATIVE SCENARIO 7	Move Eastmoor Academy to co-locate with East High School
ALTERNATIVE SCENARIO 8	Move Columbus Alternative High School to North High School
ALTERNATIVE SCENARIO 9	Move Columbus Alternative High School to East High School
ALTERNATIVE SCENARIO 10	Move Columbus Alternative High School to Linden-McKinley High School
ALTERNATIVE SCENARIO 11	Convert Beechcroft High School into middle school; move Woodward Park; Reassign Beechcroft to Northland High School.
ALTERNATIVE SCENARIO 12	Turn Siebert Elementary into the “South Side Community Elementary School” supported by Community Development for All People.


CONSIDERATION OF ALTERNATIVES

ALTERNATIVE SCENARIO 1	Convert South into a middle school instead of Marion-Franklin
ALTERNATIVE SCENARIO 2	Co-locate Buckeye Middle School (6-8) at Marion-Franklin High School (9-12)
ALTERNATIVE SCENARIO 3	Convert South into separate South Middle School (6-8) and South High School (9-12)
ALTERNATIVE SCENARIO 4	Close Siebert Elementary
ALTERNATIVE SCENARIO 5	Convert Linden-McKinley into separate Linden-McKinley Middle School (6-8) and Linden-McKinley High School (9-12)
ALTERNATIVE SCENARIO 6	Redraw Linden-McKinley feeder; Reopen Linmoor Middle and Hudson Elem; Build new Linden-McKinley; Sell current Linden-McKinley High School
ALTERNATIVE SCENARIO 7	Move Eastmoor Academy to co-locate with East High School
ALTERNATIVE SCENARIO 8	Move Columbus Alternative High School to North High School
ALTERNATIVE SCENARIO 9	Move Columbus Alternative High School to East High School
ALTERNATIVE SCENARIO 10	Move Columbus Alternative High School to Linden-McKinley High School
ALTERNATIVE SCENARIO 11	Convert Beechcroft High School into middle school; move Woodward Park; Reassign Beechcroft to Northland High School.
ALTERNATIVE SCENARIO 12	Turn Siebert Elementary into the “South Side Community Elementary School” supported by Community Development for All People.


FINAL VOTING OF THE TASK FORCE

2018 FACILITIES TASK FORCE RECOMMENDATION BALLOT

YES	NO		
<input type="checkbox"/>	<input type="checkbox"/>	1	BOUNDARY CHANGE HIGHLAND ELEMENTARY • WEST BROAD ELEMENTARY • WESTGATE ELEMENTARY
<input type="checkbox"/>	<input type="checkbox"/>	2	BOUNDARY CHANGE MAIZE ELEMENTARY • NORTH LINDEN ELEMENTARY
<input type="checkbox"/>	<input type="checkbox"/>	3	RELOCATION COLS NORTH INTERNATIONAL • GLOBAL ACADEMY • DOMINION MIDDLE • COLUMBUS SPANISH IMMERSION • ECOLE KENWOOD • HUBBARD MASTERY
<input type="checkbox"/>	<input type="checkbox"/>	4	ADJUST FEEDER PATTERN MARION FRANKLIN HIGH • SOUTH HIGH • BUCKEYE MIDDLE • SIEBERT • FAIRWOOD • LIVINGSTON • MOLER • LINCOLN PARK • STEWART • SOUTHWOOD • CEDARWOOD • PARSONS • WATKINS ELEMENTARY
<input type="checkbox"/>	<input type="checkbox"/>	4A	ADJUST FEEDER PATTERN SAME AS RECOMMENDATION 4 BUT INSTEAD OF CONVERTING MARION-FRANKLIN INTO MIDDLE SCHOOL, CONVERT SOUTH TO THE MIDDLE SCHOOL AND REASSIGN MIDDLE SCHOOL STUDENTS TO SOUTH MIDDLE SCHOOL.
<input type="checkbox"/>	<input type="checkbox"/>	4B	ADJUST FEEDER PATTERN CO-LOCATION OF BUCKEYE MIDDLE INTO MARION- FRANKLIN HS AND CREATION OF DEDICATED 6-8 MIDDLE SCHOOL IN SOUTH HS.
<input type="checkbox"/>	<input type="checkbox"/>	4C	CO-LOCATION OF BUCKEYE MIDDLE INTO MARION-FRANKLIN HIGH SCHOOL
<input type="checkbox"/>	<input type="checkbox"/>	4D	CREATION OF A DEDICATED 6-8 MIDDLE SCHOOL IN SOUTH HIGH SCHOOL
<input type="checkbox"/>	<input type="checkbox"/>	4E	ADJUST SOUTHWOOD AND STEWART, CLOSE SIEBERT ELEMENTARY
<input type="checkbox"/>	<input type="checkbox"/>	4F	FAIRWOOD ELEMENTARY MOVES TO EAST FEEDER PATTERN
<input type="checkbox"/>	<input type="checkbox"/>		NONE OF THESE RECOMMENDATIONS

 COLUMBUS CITY SCHOOLS

YES	NO	
<input type="checkbox"/>	<input type="checkbox"/>	5 ADJUST FEEDER PATTERN EAST HIGH SCHOOL • LINDEN-MCKINLEY STEM ACADEMY • HAMILTON STEM • LINDEN STEM • SOUTH MIFFLIN STEM • WINDSOR STEM • MEDINA MIDDLE SCHOOL • MIFFLIN MIDDLE SCHOOL
<input type="checkbox"/>	<input type="checkbox"/>	5A ADJUST FEEDER PATTERN ONLY CREATION OF A DEDICATED 6-8 MIDDLE SCHOOL IN LINDEN-MCKINLEY STEM ACADEMY
<input type="checkbox"/>	<input type="checkbox"/>	EAST ENROLLMENT ADJUSTMENT ADDRESS UNDER-UTILIZATION AT EAST HIGH SCHOOL
<input type="checkbox"/>	<input type="checkbox"/>	NONE OF THESE RECOMMENDATIONS
<input type="checkbox"/>	<input type="checkbox"/>	ADMIN 1 CLOSE MORSE RD BUS COMPOUND • BEERY/MARION-FRANKLIN OPPORTUNITY CTR • ADULT EDUCATION AT LEXINGTON AVE.
<input type="checkbox"/>	<input type="checkbox"/>	1A CLOSE MORSE ROAD BUS COMPOUND • ADULT EDUCATION AT LEXINGTON AVE. STUDY BEERY/MARION-FRANKLIN OPPORTUNITY CENTER
<input type="checkbox"/>	<input type="checkbox"/>	ADMIN 2 RELOCATE LINMOOR EDUCATION CENTER • SEVENTEENTH AVE. FACILITY • HUDSON DISTRIBUTION CENTER
<input type="checkbox"/>	<input type="checkbox"/>	ADMIN 3 STUDY DOWNTOWN CEC • FOOD PRODUCTION CENTER • KINGSWOOD DATA CENTER • FT HAYES TRANSPORTATION

 COLUMBUS CITY SCHOOLS



COLUMBUS CITY SCHOOLS
2018 FACILITIES TASK FORCE

PRESENTATION OF FINAL RECOMMENDATIONS

FINAL RECOMMENDATION OF THE TASK FORCE

RECOMMENDATION

1

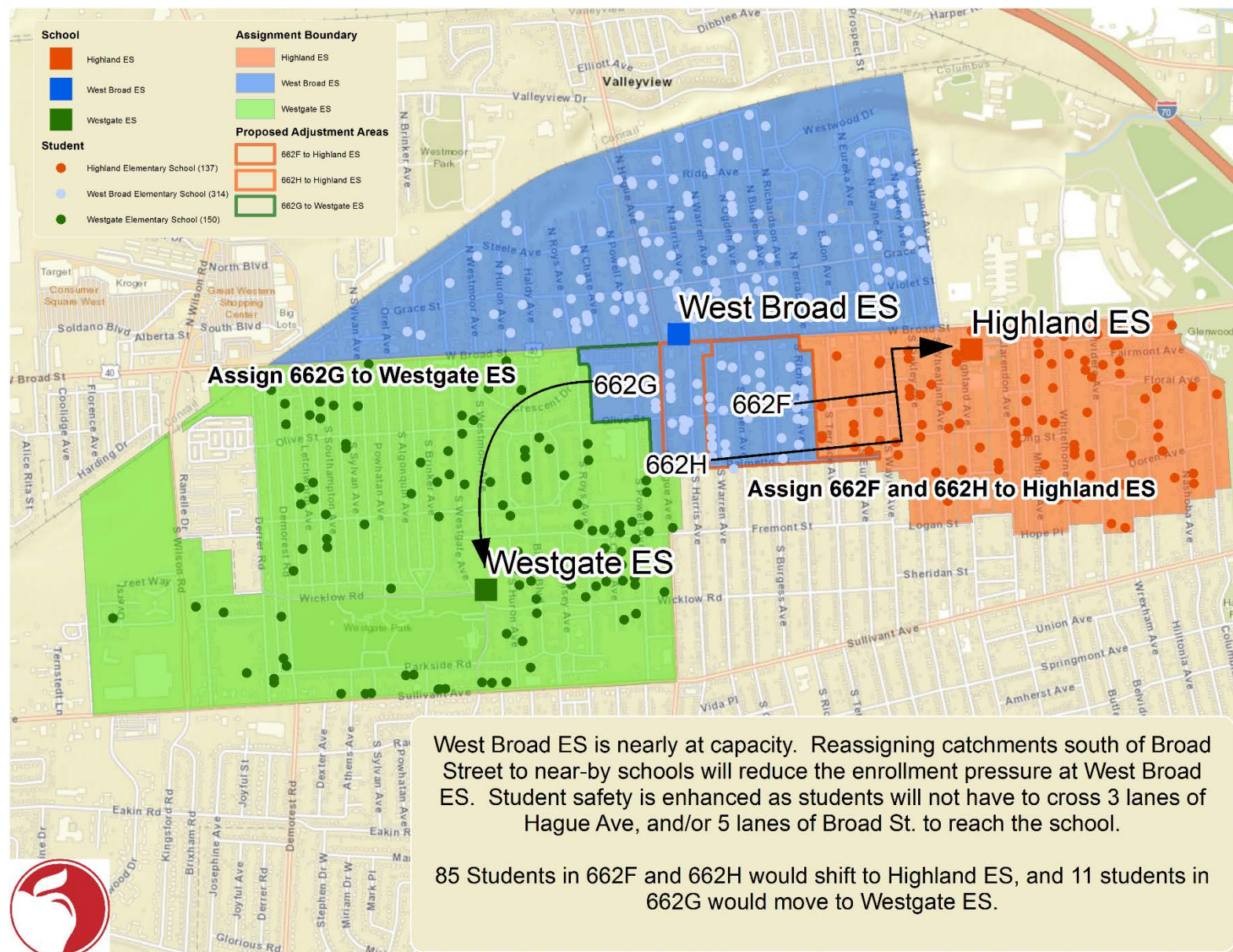
BOUNDARY CHANGE

HIGHLAND ELEMENTARY • WEST BROAD ELEMENTARY • WESTGATE ELEMENTARY

The Facilities Task Force recommends the adjustment of attendance boundaries for Highland Elementary, West Broad Elementary, and Westgate Elementary to distribute student enrollment across the three buildings, balance building utilization, and improve safe access for students in the neighborhood.

RATIONALE:

- West Broad Elementary is at near full capacity, while Highland Elementary and Westgate Elementary are at lower utilization rates. This adjustment will better balance the enrollment and utilization rates.
- The move will place more students in the improved classroom conditions at Highland Elementary, which has received major Operation: Fix It repairs (including air conditioning).
- New attendance boundaries would also align with Broad Street and Hague Avenue to improve safe access by preventing students from crossing major roadways in the area.
- The Task Force recommends implementation in the 2019-2020 school year.



FINAL RECOMMENDATION OF THE TASK FORCE

RECOMMENDATION

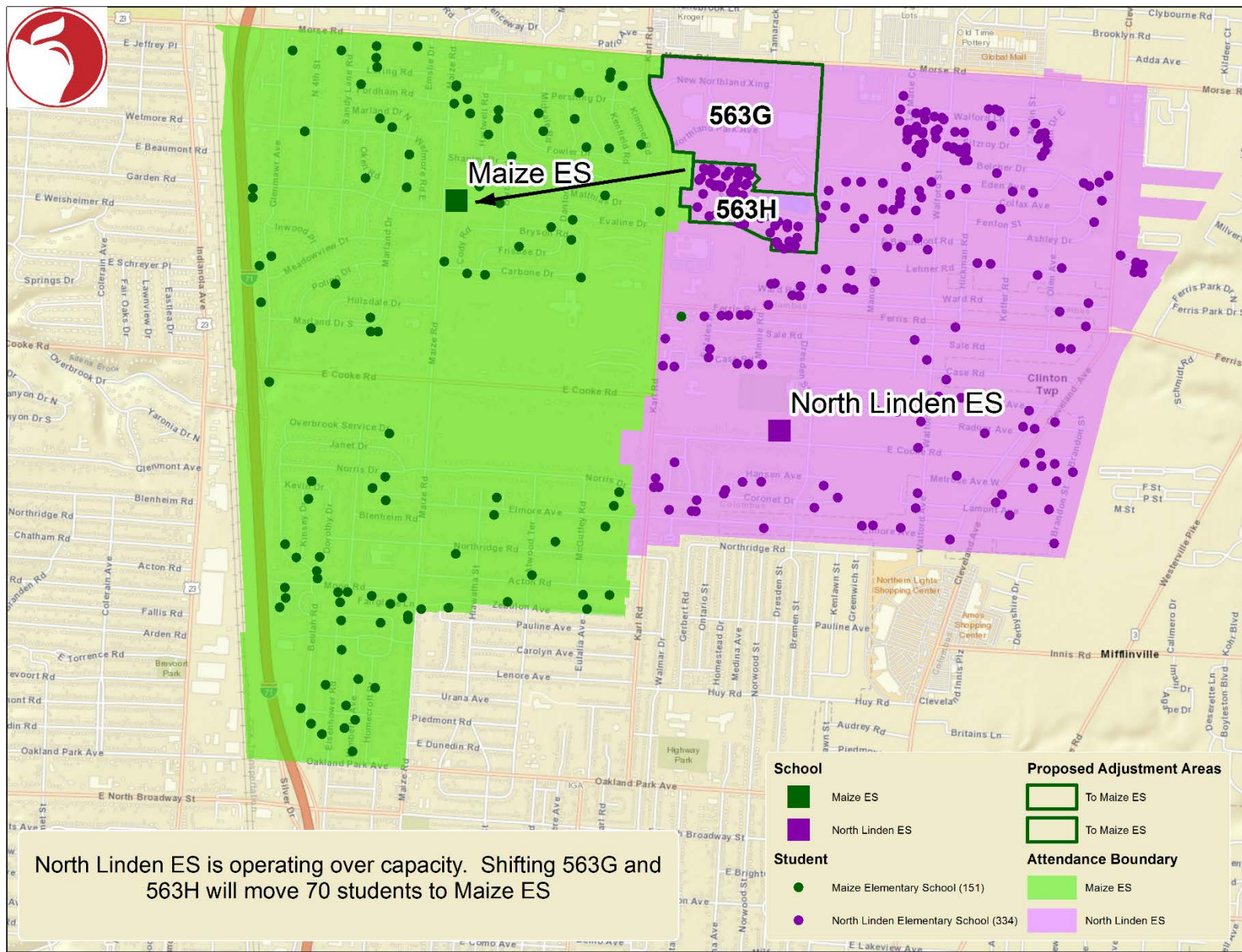
2

BOUNDARY CHANGE MAIZE ELEMENTARY • NORTH LINDEN ELEMENTARY

The Facilities Task Force recommends the adjustment of attendance boundaries for Maize Elementary and North Linden Elementary to better distribute student enrollment and improve services to students.

RATIONALE:

- Maize Elementary is under capacity/under-enrolled, while North Linden is over capacity/over-enrolled. This boundary adjustment addresses utilization concerns at Maize Elementary and some of the enrollment limitations currently in place at North Linden Elementary.
- This adjustment may require a new English-as-a-Second-Language Unit to be established at Maize Elementary, spreading out the demands on ESL services between the two schools (North Linden currently has a busy ESL unit) and improving service to all students.
- The Task Force recommends implementation in the 2019-2020 school year.



FINAL RECOMMENDATION OF THE TASK FORCE

RECOMMENDATION

3

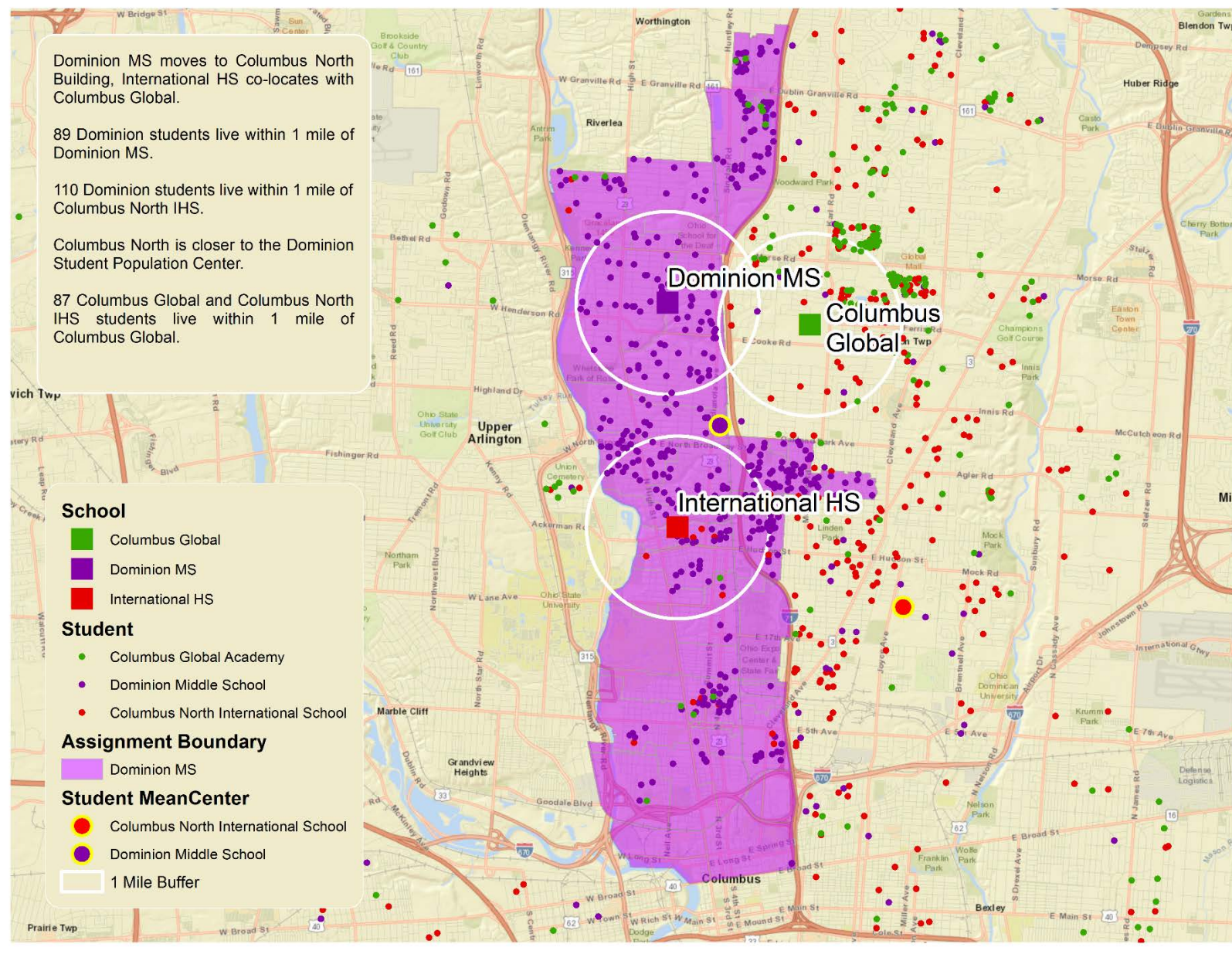
RELOCATION

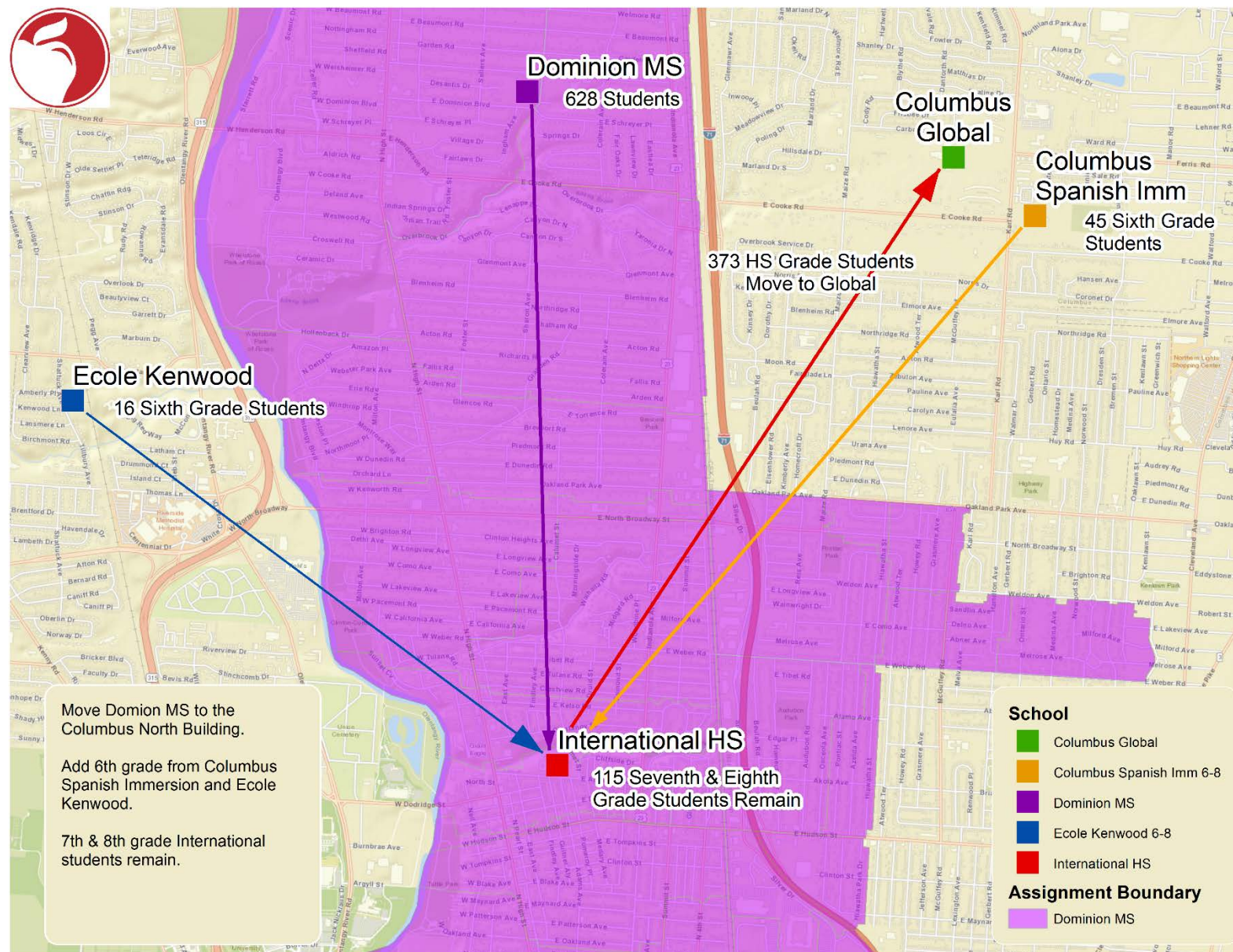
**COLUMBUS NORTH INTERNATIONAL • COLUMBUS GLOBAL ACADEMY •
DOMINION MIDDLE SCHOOL • COLUMBUS SPANISH IMMERSION ACADEMY •
ECOLE KENWOOD FRENCH IMMERSION • HUBBARD MASTERY SCHOOL**

The Facilities Task Force recommends the relocation of Columbus North International (Grades 9-12) to the former Brookhaven High School to co-locate with the current Columbus Global Academy

AND

the relocation of Dominion Middle School into the larger North High School site, expansion of Dominion's academic program to include language immersion curriculum for Grades 6-8, addition of Columbus International Grades 7-8 to Dominion, and reassignment of Grade 6 from Columbus Spanish Immersion Academy, Ecole Kenwood French Immersion, and Hubbard Mastery into relocated Dominion Middle School.





FINAL RECOMMENDATION OF THE TASK FORCE

RECOMMENDATION

3

RELOCATION

**COLUMBUS NORTH INTERNATIONAL • COLUMBUS GLOBAL ACADEMY •
DOMINION MIDDLE SCHOOL • COLUMBUS SPANISH IMMERSION ACADEMY •
ECOLE KENWOOD FRENCH IMMERSION • HUBBARD MASTERY SCHOOL**

RATIONALE FOR CNIS MOVE:

- The co-location of CNIS and Columbus Global Academy would maximize building usage/capacity at the Brookhaven site and advance a favored recommendation from the Facilities Master Plan to connect the two programs.
- Restoring Columbus International High School to a 9-12 High School (instead of 7-12) and returning CNIS to a middle school setting also supports community interest to have more traditional grade banding.
- To further address enrollment, the Task Force would recommend that Columbus Global Academy students be given a reservation at International High School if they would choose not to go back to their home school after completing the Global curriculum.

CONSIDERATION FOR CNIS MOVE:

- The co-location of CNIS and Columbus Global Academy at the Brookhaven site is only possible if CNIS Grade 7-8 remain at the North High School facility. Unpredictable fluctuation in Global's enrollment - combined with CNIS 7-12 - would strain building capacity.

FINAL RECOMMENDATION OF THE TASK FORCE

RECOMMENDATION

3

RELOCATION

**COLUMBUS NORTH INTERNATIONAL • COLUMBUS GLOBAL ACADEMY •
DOMINION MIDDLE SCHOOL • COLUMBUS SPANISH IMMERSION ACADEMY •
ECOLE KENWOOD FRENCH IMMERSION • HUBBARD MASTERY SCHOOL**

RATIONALE FOR DOMINION MOVES:

- The North High School building, located within the Dominion community, provides much-needed space for Dominion's enrollment (currently operating at approximately 120% of building capacity) and features significant renovations and high-school-level accommodations which will boost Dominion's educational and extra-curricular offerings.
- Re-envisioning Dominion's academic program provides students from CSIA, Ecole Kenwood, and Hubbard Mastery with a dedicated middle school program unique to their academic pathway and addresses family concerns about where these students go after elementary (and reduces high 6th grade transfer rates).
- Moving 6th grade out of CSIA, Ecole Kenwood, and Hubbard Mastery opens space that might allow for increases in student enrollment.
- The new Dominion Middle School provides a true middle school experience for our Language Immersion and Mastery 6th grade students, as well as our 7th and 8th grade students from International.
- The Task Force recommends an additional year of planning with implementation in the 2020-2021 school year.

FINAL RECOMMENDATION OF THE TASK FORCE

ALTERNATIVE 4 B

ADJUST FEEDER PATTERN
CO-LOCATION OF BUCKEYE MIDDLE SCHOOL INTO MARION-FRANKLIN HIGH
AND
CREATION OF A DEDICATED 6-8 MIDDLE SCHOOL IN SOUTH HIGH SCHOOL

As an alternative, the Facilities Task Force recommends the co-location of Buckeye Middle School into Marion-Franklin High School (with two separate and distinct programs, administration, and services) and closure of the Buckeye building,

AND

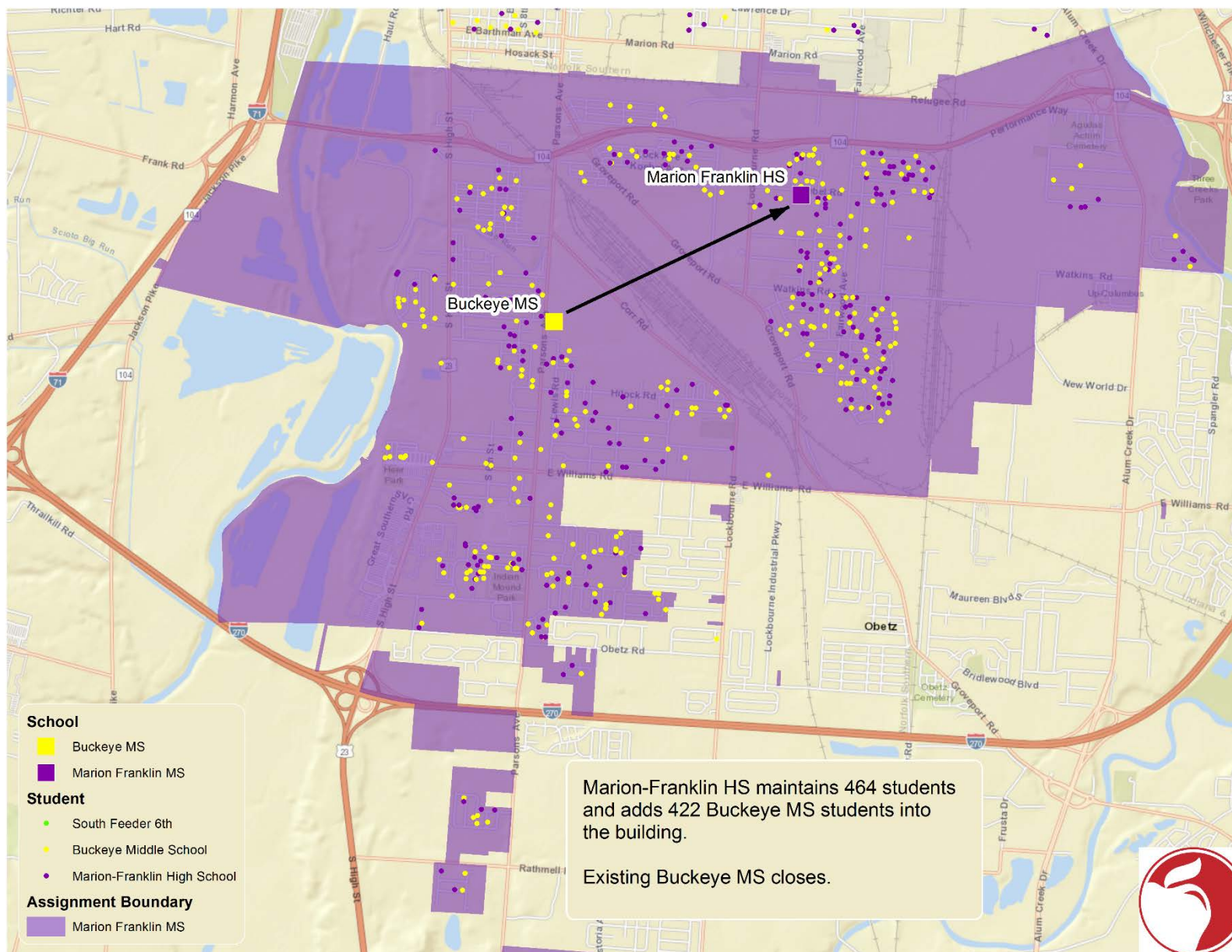
creation of a dedicated South Middle School within South High School (with two separate and distinct programs, administration, and services), reassignment of Grade 6 from Lincoln Park, Livingston, Moler, Siebert, Stewart, and Southwood to the new South Middle School (joining the current Grade 7-8 already at South),

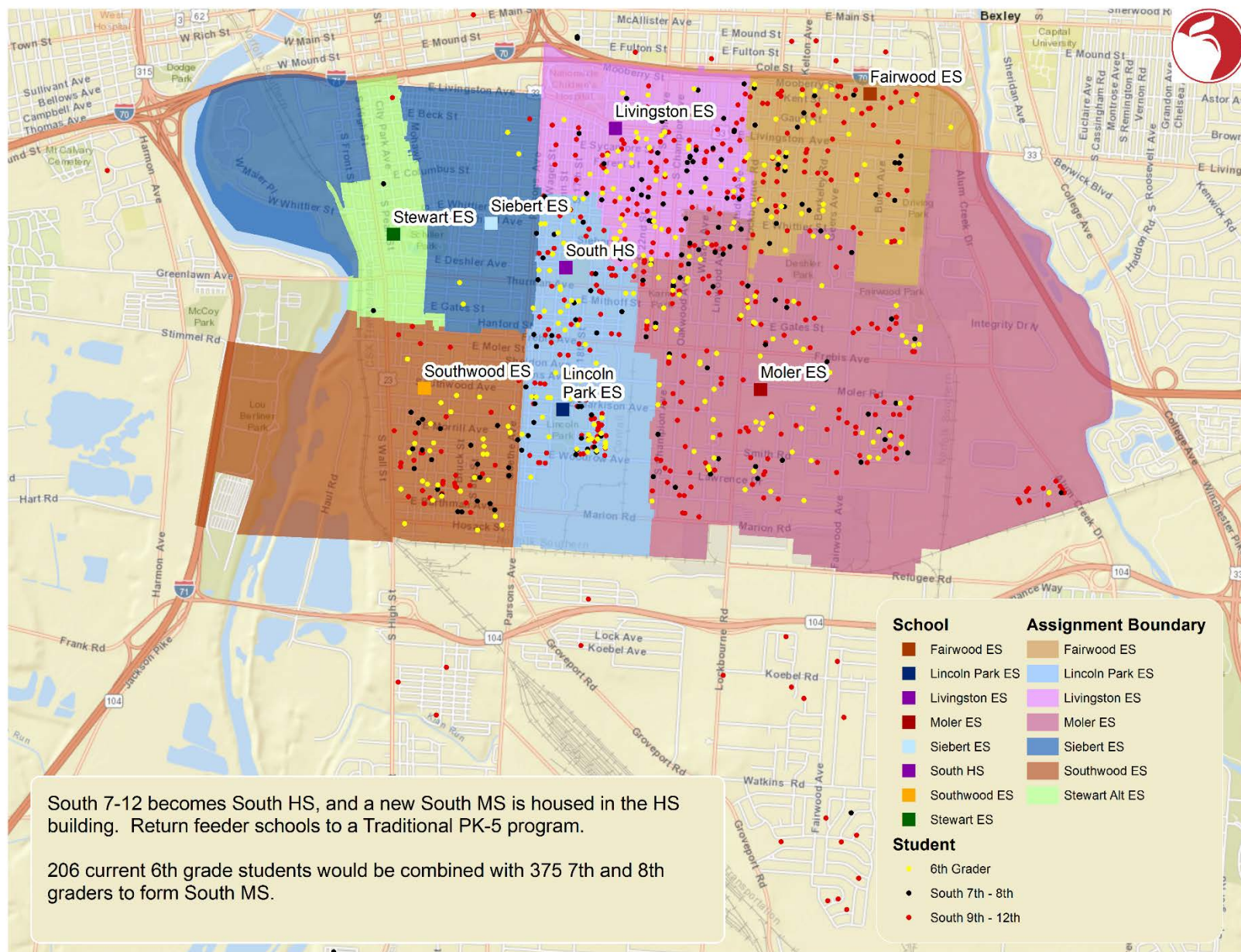
AND

adjustment of the attendance boundaries for Southwood Elementary and Stewart Elementary to include the current Siebert neighborhood catchment, closure of Siebert Elementary.

AND

adjustment of Fairwood Elementary into the East feeder pattern, with Grade 6 reassigned to Champion Middle School.





FINAL RECOMMENDATION OF THE TASK FORCE

ALTERNATIVE 4 B

ADJUST FEEDER PATTERN
CO-LOCATION OF BUCKEYE MIDDLE SCHOOL INTO MARION-FRANKLIN HIGH
AND
CREATION OF A DEDICATED 6-8 MIDDLE SCHOOL IN SOUTH HIGH SCHOOL

RATIONALE FOR SEPARATE MIDDLE SCHOOLS:

- This recommendation seeks to create separate middle schools - with separate and distinct programs, administration, and services from the high schools. This is NOT the creation of a 6-12 school, but a unique 6-8/9-12 model which provides both distinct separation and potential for vertical collaboration.
- The addition of a middle school into Marion-Franklin High School addresses the extremely low building utilization (53%).
- The creation of a dedicated middle school (Grades 6-8) at South High School provides for traditional grade banding and a truer middle school experience for students.
- The Marion-Franklin building is receiving significant “Operation: Fix It” repair investments (including updated HVAC and air conditioning) which make it a more welcoming and larger facility than Buckeye.
- Moving Grade 6 out of the elementary schools creates additional space at Fairwood, Lincoln Park, Livingston, Moler, Stewart, and Southwood and allow existing teachers and staff to better address non-academic barriers. The additional space will also allow for additional Pre-Kindergarten classes at those school, pending funding and staffing.
- The Task Force recommends a year of planning on the Marion-Franklin/South plans with implementation in the 2020-2021 school year.

FINAL RECOMMENDATION OF THE TASK FORCE

ALTERNATIVE 4 B

ADJUST FEEDER PATTERN
CO-LOCATION OF BUCKEYE MIDDLE SCHOOL INTO MARION-FRANKLIN HIGH
AND
CREATION OF A DEDICATED 6-8 MIDDLE SCHOOL IN SOUTH HIGH SCHOOL

RATIONALE FOR CHANGES AT SIEBERT AND FAIRWOOD:

- The reassignment of students currently in the Siebert Elementary neighborhood to Southwood Elementary and Stewart Elementary provides improved learning spaces for students in buildings that have been renovated (and have air conditioning). Changing the home schools for this neighborhood might also draw students and families back to attending a school closer to home.
- Lessening the impact of this closure, it's important to note the percentages of students assigned to Siebert, with approximately 7% by neighborhood, 19% by choice/lottery, and 65% by District placement (including placement for English as a Second language and Special Education service).
- The move of Fairwood students in Grade 6 to Champion Middle School places students in improved classroom space in a renovated building (with air conditioning) and provides a true middle school experience.
- The adjustment of Fairwood into the East feeder pattern increases utilization at Champion Middle School and East High School.
- The Task Force recommends implementation of Siebert's closure and Fairwood's reassignment in the 2019-2020 school year.

FINAL RECOMMENDATION OF THE TASK FORCE

ALTERNATIVE 4 B

ADJUST FEEDER PATTERN
CO-LOCATION OF BUCKEYE MIDDLE SCHOOL INTO MARION-FRANKLIN HIGH
AND
CREATION OF A DEDICATED 6-8 MIDDLE SCHOOL IN SOUTH HIGH SCHOOL

CONSIDERATIONS ON ALTERNATIVE PLAN:

- The co-location/creation of middle schools on high school campuses does address building utilization/capacity concerns. However, this alternative plan does not provide for larger high school enrollments, which are the driving factor to broader academic opportunity (including a greater number, more diverse, and more robust selection of electives and extra-curricular activities).
- The co-location/creation of middle schools on high school campuses might actually restrict and limit future expansion of high school enrollment, since the plan already pushes toward maximum building capacity.
- Immediate closure of Siebert would create a one-time burden on incoming 6th Graders, who would transition to Southwood or Stewart in 2019-2020 and then transition again to the new South Middle School in 2020-2021. Conversely, a delayed closure at the building could also be problematic as families and staff begin to seek alternative schools/worksites throughout the transitional school year.

FINAL RECOMMENDATION OF THE TASK FORCE

RECOMMENDATION

5

ADJUST FEEDER PATTERN

**EAST HIGH SCHOOL • LINDEN-McKINLEY STEM ACADEMY • HAMILTON STEM K-6 •
LINDEN STEM K-6 • SOUTH MIFFLIN STEM K-6 • WINDSOR STEM K-6 •
MEDINA MIDDLE SCHOOL • MIFFLIN MIDDLE SCHOOL**

The Facilities Task Force recommends the conversion of Linden-McKinley STEM Academy into Linden-McKinley STEM Middle School (retaining the current Grades 7-8 at Linden-McKinley), reassignment of Linden-McKinley Grades 9-12 to East High School, adjustment of East High School's feeder pattern to include the new Linden-McKinley STEM Middle School, Hamilton STEM, Linden STEM, South Mifflin STEM, and Windsor STEM.

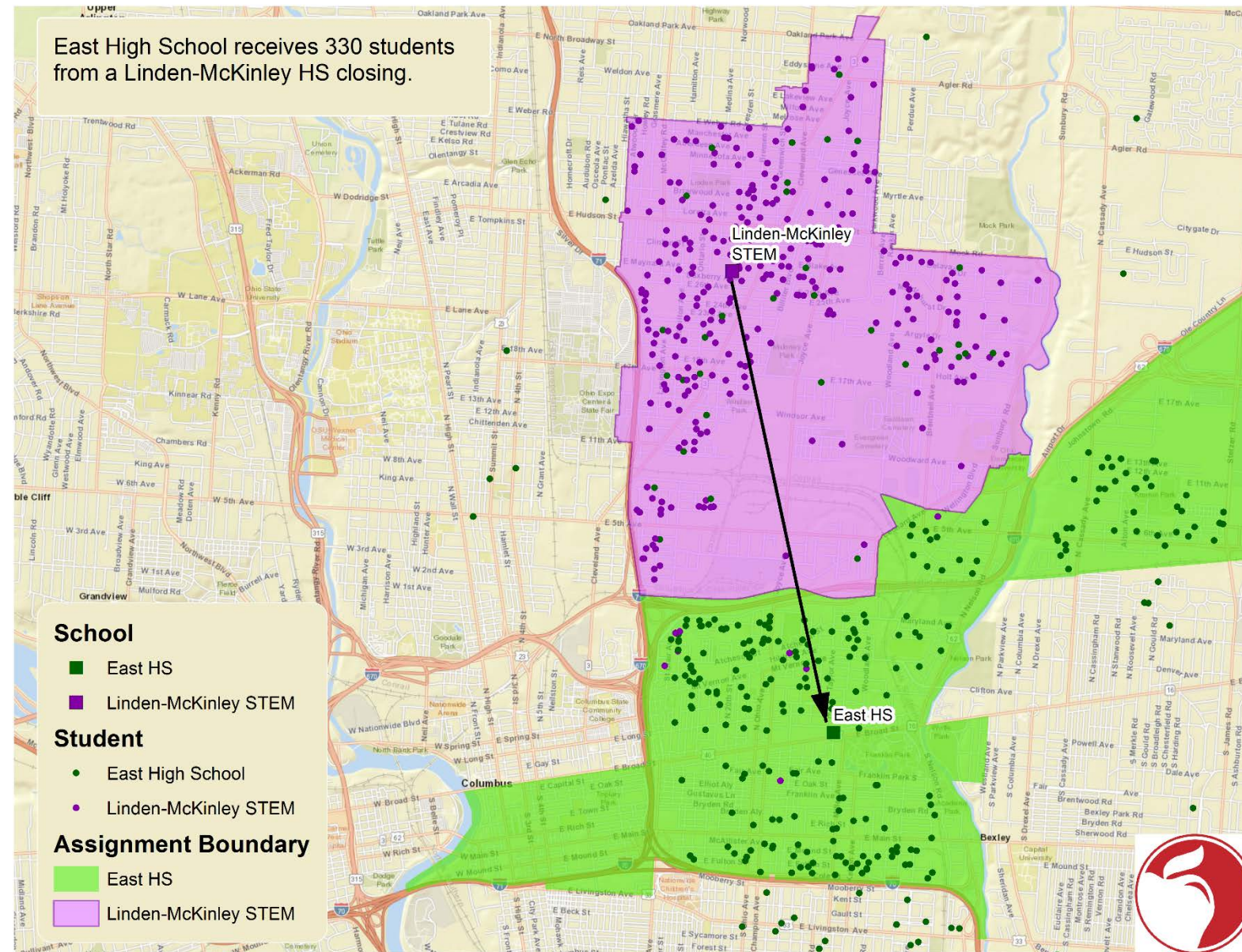
AND

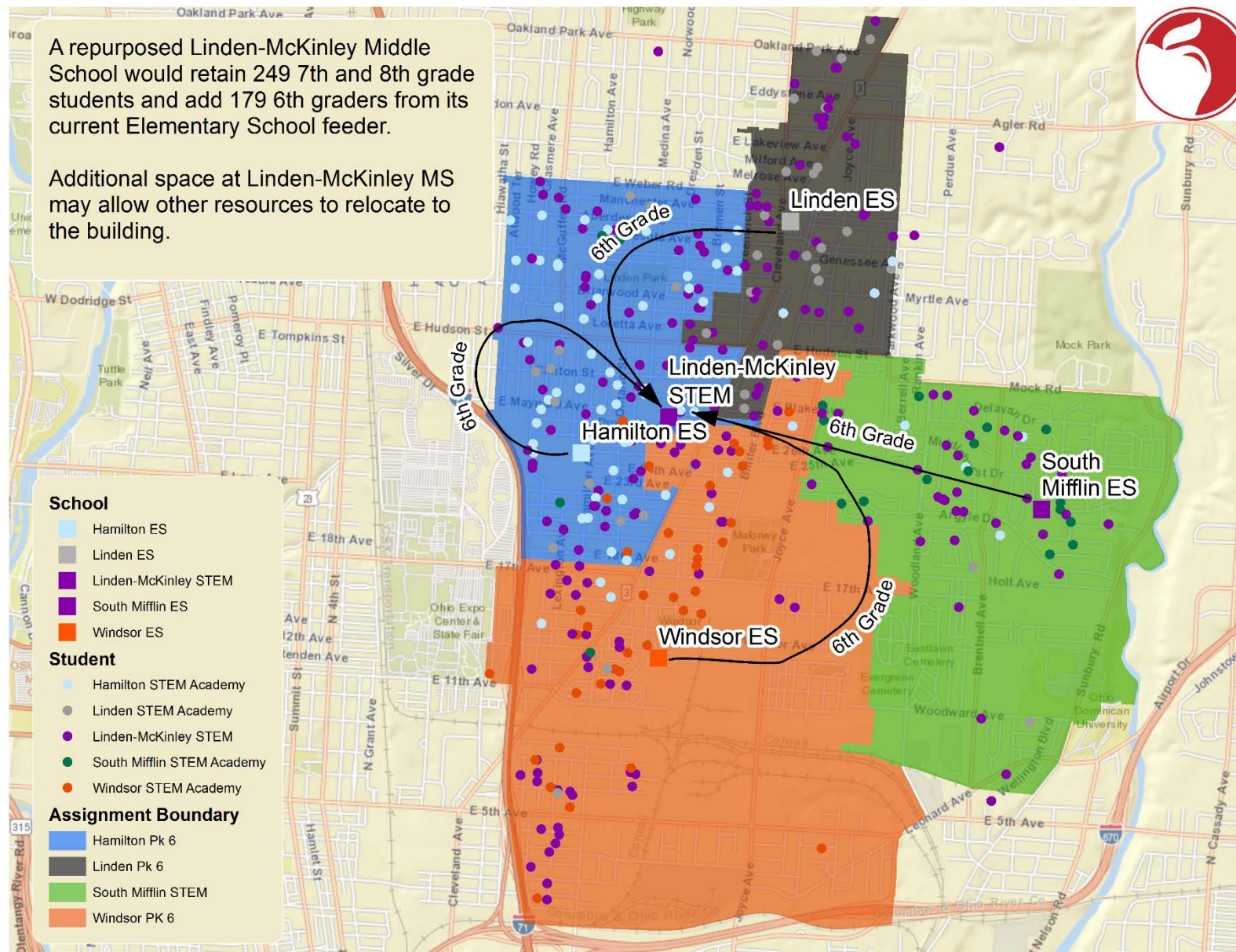
reassignment of Grade 6 from Hamilton STEM, Linden STEM, South Mifflin STEM, and Windsor STEM to the new Linden-McKinley STEM Middle School.

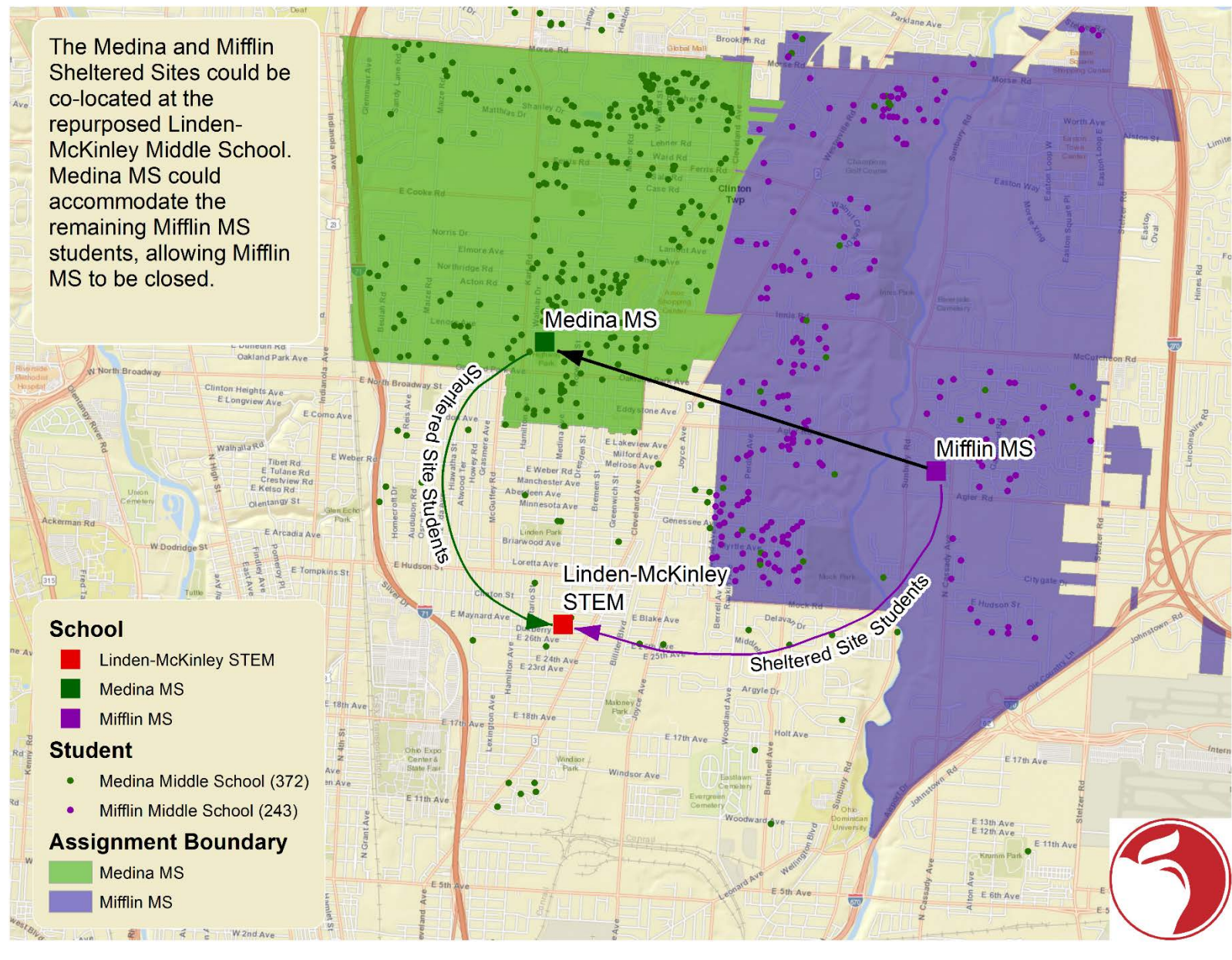
AND

reassignment of middle school English-as-a-Second-Language Units (including the ESL Sheltered Site) at Medina Middle School and Mifflin Middle School to the new Linden-McKinley STEM Middle School, adjustment of the attendance boundary for Medina Middle to include the current Mifflin Middle catchment boundary (merging both schools at Medina), and closure of the Mifflin Middle School building.

East High School receives 330 students from a Linden-McKinley HS closing.







FINAL RECOMMENDATION OF THE TASK FORCE

RECOMMENDATION

5

ADJUST FEEDER PATTERN

**EAST HIGH SCHOOL • LINDEN-McKINLEY STEM ACADEMY • HAMILTON STEM K-6 •
LINDEN STEM K-6 • SOUTH MIFFLIN STEM K-6 • WINDSOR STEM K-6 •
MEDINA MIDDLE SCHOOL • MIFFLIN MIDDLE SCHOOL**

RATIONALE:

- Larger grade-level enrollments allow for more robust and diverse educational opportunities and extra-curricular offerings (which are currently not available at either East or Linden-McKinley because of the smaller total enrollment).
- The merger of Grades 9-12 at East and Linden-McKinley would address building utilization concerns at both schools, which are low. Having two middle schools feeding into East High School would continue to address utilization concerns.
- In addition to restoring traditional grade banding and a true middle school experience for students in the current Linden-McKinley feeder, the move of Grade 6 out of the STEM Elementary Schools provides space to better address non-academic barriers and open new space for Pre-Kindergarten (pending funding and staffing).
- Reassignment of the ESL Sheltered Site and ESL Units from Mifflin Middle and Medina Middle benefits students who will be served in updated spaces within Linden-McKinley (renovated building with air conditioning). Combining Mifflin Middle and Medina Middle allows for the closure of the Mifflin Middle building, which has significant infrastructure needs.
- The Task Force recommends an additional year of planning with implementation in the 2020-2021 school year.

FINAL RECOMMENDATION OF THE TASK FORCE

RECOMMENDATION

5

ADJUST FEEDER PATTERN

**EAST HIGH SCHOOL • LINDEN-McKINLEY STEM ACADEMY • HAMILTON STEM K-6 •
LINDEN STEM K-6 • SOUTH MIFFLIN STEM K-6 • WINDSOR STEM K-6 •
MEDINA MIDDLE SCHOOL • MIFFLIN MIDDLE SCHOOL**

CONSIDERATIONS:

- Linden-McKinley High School has a significant history/legacy in the Linden community. Though the school will remain open and serve the neighborhood, the change will require the community to alter its perception of the school and its continued support for middle-school students/student activities.
- The merger eliminates a specific high school for the Linden community.
- The City's "One Linden Plan" could affect this decision, based on which elements of the plan are implemented. The new Linden-McKinley Middle School does meet the plan's call for connecting schools and social services (which could provide directed services for middle school families at the building). However, the Plan's proposal to offer monetary incentives for students to attend Linden schools would likely result in an unchartered expansion of students returning to their home schools and/or attempting to lottery into the Linden-McKinley feeder pattern.
- Mifflin Middle School has made tremendous gains as part of an overall transformation, with notable growth in family engagement and business/community support. Further stakeholder engagement would be required to determine how to best continue that support and academic gain after the proposed merger.

FINAL RECOMMENDATION OF THE TASK FORCE

ADMIN SITE RECOMMENDATION

1

CLOSE

**MORSE ROAD BUS COMPOUND • BEERY/MARION-FRANKLIN OPPORTUNITY CENTER
• ADULT EDUCATION AT LEXINGTON AVE.**

The Facilities Task Force recommends that the District identify immediate plans (by the end of the 2019-2020 school year) to move existing operations/ programming out of the Morse Road Bus Compound, the former Beery Middle School/Marion-Franklin Opportunity Center, and the Adult Education Center on Lexington Avenue and close all the facilities.

RATIONALE:

- The Morse Road Bus Compound is the District's smallest transportation site; it's buses, operations, and staff could be absorbed into other sites within the District with minimal impact on continuity of operations. This valuable property could be sold, earning the District approximately \$5.8 million (previously appraised value)
- The former Beery Middle School Building is severely underutilized (currently only one CCS staff member) and the District could relocate classes with minimal impact on continuity of operations. Other functions in the building could maintain current lease arrangements or the District can assist in identifying space for relocation.
- The Adult Education Center at Lexington Avenue is inadequate to effectively grow the program; the District could relocate classes to under-utilized school buildings with minimal impact.

FINAL RECOMMENDATION OF THE TASK FORCE

ADMIN SITE RECOMMENDATION

2

RELOCATE LINMOOR EDUCATION CENTER • SEVENTEENTH AVE. FACILITY • HUDSON DISTRIBUTION CENTER

The Facilities Task Force recommends that the District identify plans to relocate existing operations/programming out of the Linmoor Education Center, Seventeenth Ave. Facility, and the Hudson Distribution Center into new space that is better able to accommodate these functions (which may include the Southland facility or school sites).

RATIONALE:

- The Linmoor Education Center is an older, underutilized facility, housing office functions that should be relocated to another facility. Options for Success should be moved elsewhere with minimal impact on continuity of operations.
- Office functions within the District's Seventeenth Avenue Facility should be relocated to another facility which better serves the current visitor traffic which is underserved by limited parking and difficult exiting onto 17th Avenue. Plans for relocation of Fleet Services and Buildings & Grounds shop space would need to be established. This is valuable property (appraised at \$2.5 million).
- Most office functions at the Hudson Distribution Center should be relocated to another facility which better serves the visitors and staff, with plans for relocation of the District's warehouse functions established. This valuable property is appraised at \$3.7 million.

FINAL RECOMMENDATION OF THE TASK FORCE

ADMIN SITE RECOMMENDATION

3

STUDY

DOWNTOWN CEC • FOOD PRODUCTION CENTER • KINGSWOOD DATA CENTER • FORT HAYES TRANSPORTATION COMPOUND

The Facilities Task Force recommends that the District develop a long-range study on the feasibility, cost, and potential relocation sites for the downtown CEC Complex, Food Production Center, Ft. Hayes Transportation Compound, and Kingswood Data Center.

RATIONALE:

- CEC houses the District's core leadership functions. Additional work is needed to study the impact of relocating those leadership functions out of central Downtown.
- The Food Production Center is a unique building. Considerable challenges come in identifying adequate space for such a unique function and maintaining continuity of operations.
- The site of the Fort Hayes Transportation Compound has been identified for future use in the Facilities Master Plan, so the District will need to consider relocation in the future when the building program is relaunched. There is not the capacity to absorb current fleet into other transportation sites within the District.
- Relocation of the Kingswood Data Center, the primary data center and internet connection point for the District, would be complex. Significant investments have been made to safely and securely support data center operations.



COLUMBUS CITY SCHOOLS
2018 FACILITIES TASK FORCE

**ADDITIONAL
RECOMMENDATIONS**

GUIDANCE FROM THE FACILITIES TASK FORCE

Throughout the seven-month period of in-depth data review, wide-spread community conversation, and thoughtful deliberation, the members of the Facilities Task Force identified a number of challenges and opportunities that the Board of Education and District administration should consider that fall beyond the charge given to this community-led task force.

These “words of wisdom” are meant to be an additional set of recommendations/guidance from the task force as final decisions are made and future actions are considered.

OVER-ARCHING GUIDANCE FROM THE FACILITIES TASK FORCE:

Focus on what’s best for students and focus on the academic benefits to our students.

Focus on all who work in the schools to educate our students.

Focus on student services and on staffing our buildings with experts who will support student success.

GUIDANCE FROM THE FACILITIES TASK FORCE

THE COLUMBUS BOARD OF EDUCATION SHOULD CONSIDER...

- the impact to the special education classrooms for each recommendation.
- that supports are in place for our ELL families.
- how students will get to school (walk or bus transportation).
- the impact of staffing on these changes.
- ensuring staff members at consolidated administrative sites have adequate facilities that can accommodate the increased number of people assigned to that site.
- assessing and addressing accessibility concerns.
- examining the potential benefits of recommended school and building closures and consolidations on budget, programs, and on community outreach.
- examining why students are leaving to go to charter schools.

GUIDANCE FROM THE FACILITIES TASK FORCE

THE COLUMBUS BOARD OF EDUCATION SHOULD CONSIDER...

- the access that Dominion students would have to athletic facilities.
- looking at the anticipated growth in the Dominion enrollment.
- addressing the conditions of the CAHS facility.
- how we will engage alumni in the closing/consolidation planning.
- how newly consolidated buildings would be named; utilizing the process of choosing a new mascot as a way to engage the community.
- how we can begin to digitize our memorabilia and our history; how trophies and memorabilia would be secured and displayed.
- the best use for potential vacant buildings; what will happen to vacant administrative sites.
- the impact on a community that will have multiple vacant buildings.
- how recommended closures affect the existing vacant building assets and how these assets will be used, leased, or sold in the future.

GUIDANCE FROM THE FACILITIES TASK FORCE

THE COLUMBUS BOARD OF EDUCATION SHOULD CONSIDER...

- how this closure process affects similar efforts and plans including the Facility Master Plan, Operation: Fix It, school budgets, available programs, etc.
- clearly communicating changes to all stakeholders after the final vote is taken by the Board of Education, including the positive impacts of these changes on programming and student support services.
- having expectations that elected officials become more engaged in this process and in education issues in general.



COPIES OF THE FINAL RECOMMENDATIONS
WILL BE AVAILABLE ON THE DISTRICT
WEBSITE:

www.ccsok.us